

Activity ID	Activity Name	Original Duration	Start	Finish	J	F	M	A	M	J	J	A	S	O	N	D	J	F	M	A	M	J	J	A	S	O	N
-------------	---------------	-------------------	-------	--------	---	---	---	---	---	---	---	---	---	---	---	---	---	---	---	---	---	---	---	---	---	---	---

**23-084.1 Manasquan Elementary School Renovations and Alterations** 492.9d 05-Jan-24 A 26-Nov-25

**23-084.1.1 Manasquan Elementary School Renovations** 492.9d 05-Jan-24 A 26-Nov-25

**23-084.1.1.P Permits** 24.0d 05-Jan-24 A 17-Jun-24 A

A3600	H&S Receives Signed and Sealed Drawings	3.0d	05-Jan-24 A	09-Jan-24 A	H&S Receives Signed and Sealed Drawings																											
A3610	H&S Submits Permit Applications	5.0d	10-Jan-24 A	16-Jan-24 A	H&S Submits Permit Applications																											
A3620	Permit Applications Reviewed / Permits Obtained	15.0d	18-Jan-24 A	17-Jun-24 A	Permit Applications Reviewed / Permits Obtained																											

**23-084.1.1.M Milestones** 492.9d 05-Jan-24 A 26-Nov-25

A1000	Award / Notice to Proceed	0.0d	05-Jan-24 A		Award / Notice to Proceed																											
A1010	Start Site Improvements at Electrical Gear (Base Bid Work)	0.0d	29-Oct-25		Start Site Improvements at Electrical Gear (Base Bid Work)																											
A1030	Start Gym Renovations	0.0d	24-Jun-24 A		Start Gym Renovations																											
A1040	Start Locker Rooms (May 24, 2024)	0.0d	24-May-24 A		Start Locker Rooms (May 24, 2024)																											
A1050	Start Boys & Girls Toilet Room Renovations	0.0d	19-Jul-24 A		Start Boys & Girls Toilet Room Renovations																											
A1060	Start HVAC Work	0.0d	21-Jun-24 A		Start HVAC Work																											
A1070	Start Alteration & Renovation at 100 Wing	0.0d	09-Jul-24 A		Start Alteration & Renovation at 100 Wing																											
A1080	Start Art Room	0.0d	21-Jun-24 A		Start Art Room																											
A1090	Start Science Lab Alterations	0.0d	24-Jun-24 A		Start Science Lab Alterations																											
A1100	Site Improvement at Electrical Substantially Complete	0.0d		26-Nov-25*	Site Improvement at Electrical Substantially Complete																											
A1110	Gym Renovations Substantially Complete	0.0d		27-Aug-24*	Gym Renovations Substantially Complete																											
A1130	Locker Rooms Substantially Complete	0.0d		30-Aug-24*	Locker Rooms Substantially Complete																											
A1140	Boys & Girls Toilet Room Substantially Complete	0.0d		30-Aug-24*	Boys & Girls Toilet Room Substantially Complete																											
A1150	HVAC Work Substantially Complete	0.0d		03-Dec-24*	HVAC Work Substantially Complete																											
A1160	100 Wing Substantially Complete	0.0d		31-Oct-25*	100 Wing Substantially Complete																											
A1170	Art Room Substantially Complete	0.0d		18-Sep-24*	Art Room Substantially Complete																											
A1180	Science Lab Substantially Complete	0.0d		19-Sep-24*	Science Lab Substantially Complete																											
A1190	Last Day of School for Students (June 20, 2024)	0.0d		20-Jun-24 A	Last Day of School for Students (June 20, 2024)																											

**23-084.1.1.M.1 Submittals & Procurement** 471.9d 05-Jan-24 A 28-Oct-25

**23-084.1.1.M.1.1 Prepare & Submit** 93.0d 05-Jan-24 A 06-Aug-24

A1200	P&S Structural Steel Framing	40.0d	05-Jan-24 A	30-Apr-24 A	P&S Structural Steel Framing																											
A1210	P&S Plastic Laminate Clad Cabinets	60.0d	05-Jan-24 A	12-Mar-24 A	P&S Plastic Laminate Clad Cabinets																											
A1220	P&S Alum / Glass	60.0d	05-Jan-24 A	30-Apr-24 A	P&S Alum / Glass																											
A1230	P&S HM Doors & Frames	40.0d	05-Jan-24 A	25-Apr-24 A	P&S HM Doors & Frames																											
A1240	P&S Operable Partitions	30.0d	05-Jan-24 A	04-Mar-24 A	P&S Operable Partitions																											
A1250	P&S Lockers	60.0d	05-Jan-24 A	28-Jun-24 A	P&S Lockers																											
A1260	P&S Gym Equipment / Bleachers	40.0d	05-Jan-24 A	21-May-24 A	P&S Gym Equipment / Bleachers																											
A1270	P&S Air Handling Units & Condensers	15.0d	05-Jan-24 A	18-Feb-24 A	P&S Air Handling Units & Condensers																											
A1280	P&S Variable Air Volume Boxes	40.0d	05-Jan-24 A	18-Feb-24 A	P&S Variable Air Volume Boxes																											
A1290	P&S Exhaust Fans	40.0d	05-Jan-24 A	26-Mar-24 A	P&S Exhaust Fans																											
A1300	P&S Pumps (HP-1 & HP-2)	40.0d	05-Jan-24 A	19-Apr-24 A	P&S Pumps (HP-1 & HP-2)																											
A1310	P&S Split System (HP-1/ACCU-1)	40.0d	05-Jan-24 A	18-Feb-24 A	P&S Split System (HP-1/ACCU-1)																											
A1320	P&S Main Distribution Panel	40.0d	05-Jan-24 A	06-Aug-24	P&S Main Distribution Panel																											
A1330	P&S Panelboards	30.0d	05-Jan-24 A	23-May-24 A	P&S Panelboards																											
A1340	P&S Fire Alarm System	30.0d	05-Jan-24 A	11-Apr-24 A	P&S Fire Alarm System																											

■ Actual Level of Effort   
 ■ Remaining Work   
 ■ Critical Remaining Work   
 ◆ Milestone   
 ▼ Summary

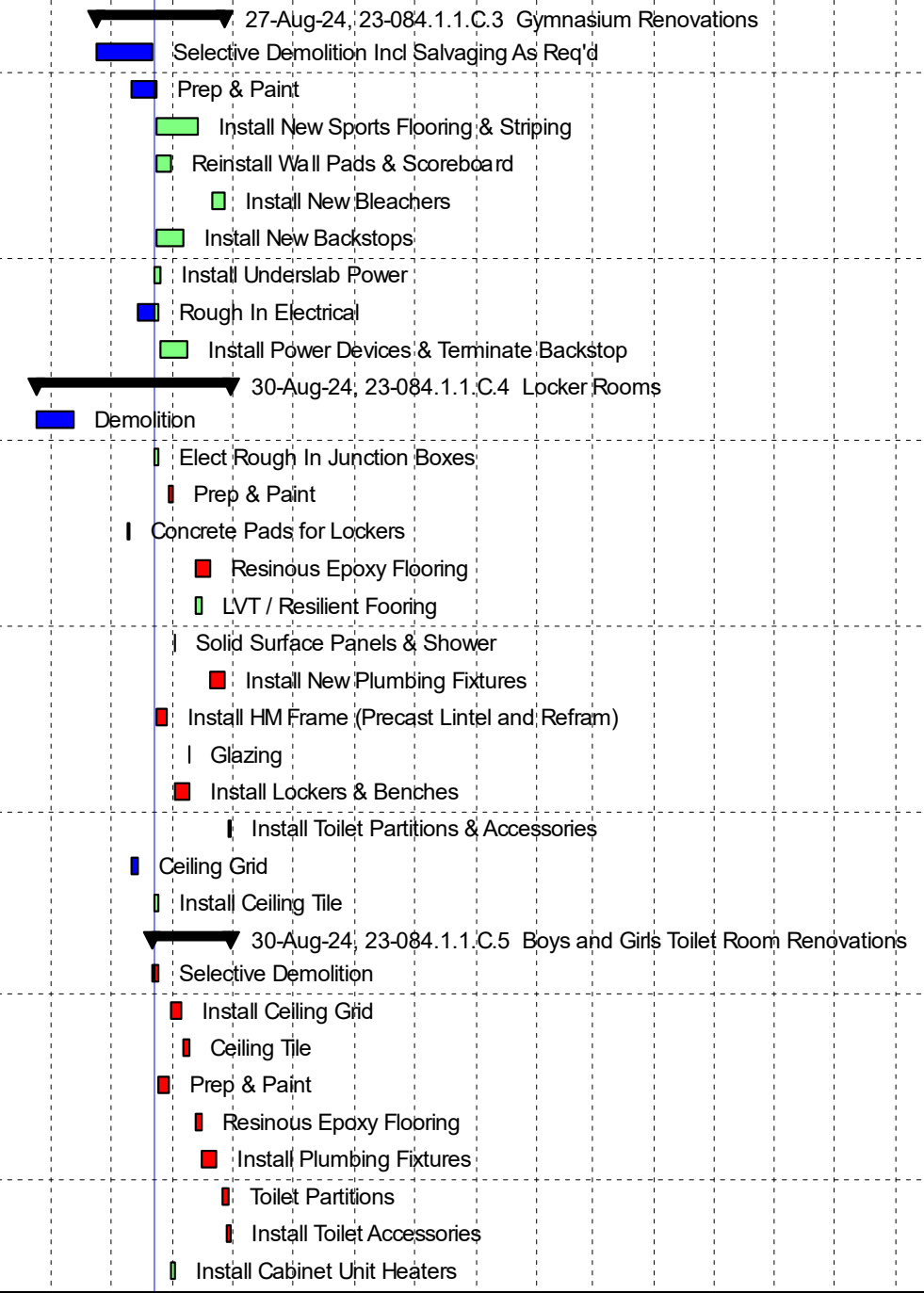
Activity ID	Activity Name	Original Duration	Start	Finish	Gantt Chart
-------------	---------------	-------------------	-------	--------	-------------

<b>23-084.1.1.M.1.1 Impacts</b> <span style="float: right;">23-Jul-24, 23-084.1.1.M.1.1 Impacts</span>						
<b>23-084.1.1.M.1.1.1 RFI #12: Transformer Panel</b> <span style="float: right;">23-Jul-24, 23-084.1.1.M.1.1.1 RFI #12: Transformer Panel</span>						
A3680	Electrician and JCP&L Meeting about Gear Package	0.0d	26-Feb-24 A			◆ Electrician and JCP&L Meeting about Gear Package
A3690	Electrician Send RFI and Architect Respond	10.0d	18-Apr-24 A	23-Jul-24		Electrician Send RFI and Architect Respond
<b>23-084.1.1.M.1.2 Owner Review &amp; Approve</b> <span style="float: right;">20-Aug-24, 23-084.1.1.M.1.2 Owner Review &amp; Approve</span>						
A1350	R&A Structural Steel Framing	10.0d	01-May-24 A	14-May-24 A		R&A Structural Steel Framing
A1360	R&A Plastic Laminate Clad Cabinets	10.0d	13-Mar-24 A	25-Apr-24 A		R&A Plastic Laminate Clad Cabinets
A1370	R&A Alum / Glass	10.0d	01-May-24 A	14-May-24 A		R&A Alum / Glass
A1380	R&A HM Doors & Frames	10.0d	26-Apr-24 A	14-May-24 A		R&A HM Doors & Frames
A1390	R&A Operable Partitions	10.0d	05-Mar-24 A	13-Mar-24 A		R&A Operable Partitions
A1400	R&A Lockers	10.0d	01-Jul-24 A	01-Jul-24 A		R&A Lockers
A1410	R&A Gym Equipment / Bleachers	10.0d	22-May-24 A	03-Jun-24 A		R&A Gym Equipment / Bleachers
A1420	R&A Air Handling Units & Condensers	10.0d	19-Feb-24 A	29-Feb-24 A		R&A Air Handling Units & Condensers
A1430	R&A Variable Air Volume Boxes	10.0d	19-Feb-24 A	29-Feb-24 A		R&A Variable Air Volume Boxes
A1440	R&A Exhaust Fans	10.0d	27-Mar-24 A	04-Apr-24 A		R&A Exhaust Fans
A1450	R&A Pumps (HP-1 & HP-2)	10.0d	22-Apr-24 A	01-May-24 A		R&A Pumps (HP-1 & HP-2)
A1460	R&A Split System (HP-1/ACCU-1)	10.0d	19-Feb-24 A	29-Feb-24 A		R&A Split System (HP-1/ACCU-1)
A1470	R&A Main Distribution Panel	10.0d	07-Aug-24	20-Aug-24		R&A Main Distribution Panel
A1480	R&A Panelboards	10.0d	24-May-24 A	29-May-24 A		R&A Panelboards
A1490	R&A Fire Alarm System	10.0d	12-Apr-24 A	25-Apr-24 A		R&A Fire Alarm System
<b>23-084.1.1.M.1.3 Fabricate &amp; Deliver (Long Lead)</b> <span style="float: right;">28-Oct-25</span>						
A1500	F&D Structural Steel Framing	30.0d	15-May-24 A	23-Jul-24	F&D Structural Steel Framing	
A1510	F&D Plastic Laminate Clad Cabinets	60.0d	26-Apr-24 A	12-Sep-24	F&D Plastic Laminate Clad Cabinets	
A1520	F&D Alum / Glass	60.0d	15-May-24 A	08-Aug-24	F&D Alum / Glass	
A1530	F&D HM Doors & Frames	60.0d	15-May-24 A	23-Jul-24	F&D HM Doors & Frames	
A1540	F&D Operable Partitions	80.0d	14-Mar-24 A	23-Aug-24	F&D Operable Partitions	
A1550	F&D Lockers	60.0d	02-Jul-24 A	01-Aug-24	F&D Lockers	
A1560	F&D Gym Equipment / Bleachers	60.0d	04-Jun-24 A	20-Aug-24	F&D Gym Equipment / Bleachers	
A1570	F&D Air Handling Units	132.0d	01-Mar-24 A	15-Nov-24	F&D Air Handling Units	
A1580	F&D Variable Air Volume Boxes	40.0d	01-Mar-24 A	25-Jun-24 A	F&D Variable Air Volume Boxes	
A1590	F&D Exhaust Fans	35.0d	05-Apr-24 A	15-Jul-24 A	F&D Exhaust Fans	
A1600	F&D Pumps (HP-1 & HP-2)	40.0d	02-May-24 A	13-Jun-24 A	F&D Pumps (HP-1 & HP-2)	
A1610	F&D Split System (HP-1/ACCU-2)	40.0d	01-Mar-24 A	16-Aug-24	F&D Split System (HP-1/ACCU-2)	
A1620	F&D Main Distribution Panel	310.0d	21-Aug-24	28-Oct-25	F&D Main Distribution Panel	
A1630	F&D Panelboards	60.0d	30-May-24 A	26-Jul-24	F&D Panelboards	
A1640	F&D Fire Alarm System	80.0d	26-Apr-24 A	22-Aug-24	F&D Fire Alarm System	
A3580	F&D Condensing Units	80.0d	01-Mar-24 A	25-Jun-24 A	F&D Condensing Units	
<b>23-084.1.1.C Construction</b> <span style="float: right;">26-Nov-25</span>						
<b>23-084.1.1.C.I Impacts</b> <span style="float: right;">16-Jul-25, 23-084.1.1.C.I</span>						
A3640	Abatement in 100 Wing Corridor and Vestibule 118A	13.0d	24-Jun-24 A	08-Jul-24 A	Abatement in 100 Wing Corridor and Vestibule 118A	
A3650	Abatement Phase I Classrooms 101, 103, 105, 107, & 109	8.0d	21-Jun-24 A	08-Jul-24 A	Abatement Phase I Classrooms 101, 103, 105, 107, & 109	
A3655	Abatement Phase II Classrooms 102, 104, 106, 108, & 110	7.0d	24-Feb-25*	05-Mar-25	Abatement Phase II Classrooms 102, 104, 106, 108	
A3660	Abatement Phase III Classrooms 111, 112, 113, 114, & 115	9.0d	03-Jul-25*	16-Jul-25	Abatement Phase III Clas	

■ Actual Level of Effort   
 ■ Remaining Work   
 ◆ Milestone   
 ■ Actual Work   
 ■ Critical Remaining Work   
  Summary

Activity ID	Activity Name	Original Duration	Start	Finish	J	F	M	A	M	J	J	A	S	O	N	D	J	F	M	A	M	J	J	A	S	O	N
-------------	---------------	-------------------	-------	--------	---	---	---	---	---	---	---	---	---	---	---	---	---	---	---	---	---	---	---	---	---	---	---

23-084.1.1.C.1 Site Improvements at Electrical Gear		21.0d	29-Oct-25	26-Nov-25
A1650	Sawcut & Removals	3.0d	29-Oct-25	31-Oct-25
A1660	Trench Conduit	6.0d	03-Nov-25	10-Nov-25
A1670	Prep & Pour Concrete Pad	5.0d	12-Nov-25	18-Nov-25
A1680	Patch / Restore Surfaces	2.0d	19-Nov-25	20-Nov-25
A1690	Install New MDP, Meter & Pull/ Terminate	3.0d	24-Nov-25	26-Nov-25
A2200	Install Conduit	5.0d	04-Nov-25	10-Nov-25
A3590	Backfill Conduit	5.0d	05-Nov-25	11-Nov-25
23-084.1.1.C.3 Gymnasium Renovations		48.0d	24-Jun-24 A	27-Aug-24
A1700	Selective Demolition Incl Salvaging As Req'd	6.0d	24-Jun-24 A	22-Jul-24 A
A1710	Prep & Paint	10.0d	12-Jul-24 A	23-Jul-24
A1720	Install New Sports Flooring & Striping	15.0d	24-Jul-24	13-Aug-24
A1730	Reinstall Wall Pads & Scoreboard	6.0d	24-Jul-24	31-Jul-24
A1740	Install New Bleachers	5.0d	21-Aug-24	27-Aug-24
A1750	Install New Backstops	10.0d	24-Jul-24	06-Aug-24
A1760	Install Underslab Power	3.0d	23-Jul-24	25-Jul-24
A1770	Rough In Electrical	15.0d	15-Jul-24 A	24-Jul-24
A1780	Install Power Devices & Terminate Backstop	10.0d	26-Jul-24	08-Aug-24
23-084.1.1.C.4 Locker Rooms		71.0d	24-May-24 A	30-Aug-24
A1790	Demolition	6.0d	24-May-24 A	12-Jun-24 A
A1800	Elect Rough In Junction Boxes	2.0d	23-Jul-24	24-Jul-24
A1810	Prep & Paint	3.0d	30-Jul-24	01-Aug-24
A1820	Concrete Pads for Lockers	1.0d	09-Jul-24 A	10-Jul-24 A
A1830	Resinous Epoxy Flooring	6.0d	12-Aug-24	19-Aug-24
A1840	LVT / Resilient Flooring	4.0d	12-Aug-24	15-Aug-24
A1850	Solid Surface Panels & Shower	1.0d	02-Aug-24	02-Aug-24
A1860	Install New Plumbing Fixtures	6.0d	20-Aug-24	27-Aug-24
A1870	Install HM Frame (Precast Lintel and Refram)	4.0d	24-Jul-24	29-Jul-24
A1880	Glazing	1.0d	09-Aug-24	09-Aug-24
A1890	Install Lockers & Benches	6.0d	02-Aug-24	09-Aug-24
A1900	Install Toilet Partitions & Accessories	2.0d	29-Aug-24	30-Aug-24
A1910	Ceiling Grid	4.0d	12-Jul-24 A	15-Jul-24 A
A1920	Install Ceiling Tile	2.0d	23-Jul-24	24-Jul-24
23-084.1.1.C.5 Boys and Girls Toilet Room Renovations		29.0d	22-Jul-24 A	30-Aug-24
A1930	Selective Demolition	4.0d	22-Jul-24 A	24-Jul-24
A1940	Install Ceiling Grid	4.0d	31-Jul-24	05-Aug-24
A1950	Ceiling Tile	4.0d	06-Aug-24	09-Aug-24
A1960	Prep & Paint	4.0d	25-Jul-24	30-Jul-24
A1970	Resinous Epoxy Flooring	4.0d	12-Aug-24	15-Aug-24
A1980	Install Plumbing Fixtures	6.0d	16-Aug-24	23-Aug-24
A1990	Toilet Partitions	4.0d	26-Aug-24	29-Aug-24
A2000	Install Toilet Accessories	3.0d	28-Aug-24	30-Aug-24
A2010	Install Cabinet Unit Heaters	3.0d	31-Jul-24	02-Aug-24



█ Actual Level of Effort   
 █ Remaining Work   
 █ Critical Remaining Work   
 ◆ Milestone   
 ▾ Summary

Activity ID	Activity Name	Original Duration	Start	Finish	Gantt Chart
-------------	---------------	-------------------	-------	--------	-------------

	<div style="display: flex; justify-content: space-between;"> <span>Install Ductwork</span> <span>3.0d</span> <span>25-Jul-24</span> <span>29-Jul-24</span> </div>				<div style="display: flex; justify-content: space-between;"> <span>Install Ductwork</span> <span>3.0d</span> <span>25-Jul-24</span> <span>29-Jul-24</span> </div>
	<div style="display: flex; justify-content: space-between;"> <span>Exhaust Fan - Including Cut Roof &amp; Patching</span> <span>2.0d</span> <span>25-Jul-24</span> <span>26-Jul-24</span> </div>				<div style="display: flex; justify-content: space-between;"> <span>Exhaust Fan - Including Cut Roof &amp; Patching</span> <span>2.0d</span> <span>25-Jul-24</span> <span>26-Jul-24</span> </div>
	<div style="display: flex; justify-content: space-between;"> <span>Rough In Electrical</span> <span>4.0d</span> <span>25-Jul-24</span> <span>30-Jul-24</span> </div>				<div style="display: flex; justify-content: space-between;"> <span>Rough In Electrical</span> <span>4.0d</span> <span>25-Jul-24</span> <span>30-Jul-24</span> </div>
	<div style="display: flex; justify-content: space-between;"> <span>Instal New Light Fixtures</span> <span>4.0d</span> <span>06-Aug-24</span> <span>09-Aug-24</span> </div>				<div style="display: flex; justify-content: space-between;"> <span>Instal New Light Fixtures</span> <span>4.0d</span> <span>06-Aug-24</span> <span>09-Aug-24</span> </div>
<b>23-084.1.1.C.6 HVAC Work</b>		<b>95.0d</b>	<b>24-Jun-24 A</b>	<b>03-Dec-24</b>	<div style="display: flex; justify-content: space-between;"> <span>03-Dec-24, 23-084.1.1.C.6 HVAC Work</span> </div>
	<div style="display: flex; justify-content: space-between;"> <span>Mechanical Demolition</span> <span>15.0d</span> <span>24-Jun-24 A</span> <span>05-Aug-24</span> </div>				<div style="display: flex; justify-content: space-between;"> <span>Mechanical Demolition</span> <span>15.0d</span> <span>24-Jun-24 A</span> <span>05-Aug-24</span> </div>
	<div style="display: flex; justify-content: space-between;"> <span>Rooftop Equipment Removals (Including Patching Unused Openings)</span> <span>10.0d</span> <span>30-Jul-24</span> <span>12-Aug-24</span> </div>				<div style="display: flex; justify-content: space-between;"> <span>Rooftop Equipment Removals (Including Patching Unused Openings)</span> <span>10.0d</span> <span>30-Jul-24</span> <span>12-Aug-24</span> </div>
	<div style="display: flex; justify-content: space-between;"> <span>Install Ductwork</span> <span>40.0d</span> <span>15-Jul-24 A</span> <span>22-Aug-24</span> </div>				<div style="display: flex; justify-content: space-between;"> <span>Install Ductwork</span> <span>40.0d</span> <span>15-Jul-24 A</span> <span>22-Aug-24</span> </div>
	<div style="display: flex; justify-content: space-between;"> <span>Install VAV's</span> <span>20.0d</span> <span>22-Jul-24 A</span> <span>22-Aug-24</span> </div>				<div style="display: flex; justify-content: space-between;"> <span>Install VAV's</span> <span>20.0d</span> <span>22-Jul-24 A</span> <span>22-Aug-24</span> </div>
	<div style="display: flex; justify-content: space-between;"> <span>Install Split System</span> <span>4.0d</span> <span>19-Aug-24</span> <span>22-Aug-24</span> </div>				<div style="display: flex; justify-content: space-between;"> <span>Install Split System</span> <span>4.0d</span> <span>19-Aug-24</span> <span>22-Aug-24</span> </div>
	<div style="display: flex; justify-content: space-between;"> <span>Rough In Electrical for Mech Equipment</span> <span>25.0d</span> <span>30-Jul-24</span> <span>02-Sep-24</span> </div>				<div style="display: flex; justify-content: space-between;"> <span>Rough In Electrical for Mech Equipment</span> <span>25.0d</span> <span>30-Jul-24</span> <span>02-Sep-24</span> </div>
	<div style="display: flex; justify-content: space-between;"> <span>Cut &amp; Flash in CU Curbs</span> <span>8.0d</span> <span>01-Aug-24</span> <span>12-Aug-24</span> </div>				<div style="display: flex; justify-content: space-between;"> <span>Cut &amp; Flash in CU Curbs</span> <span>8.0d</span> <span>01-Aug-24</span> <span>12-Aug-24</span> </div>
	<div style="display: flex; justify-content: space-between;"> <span>Install CU &amp; Final Connections</span> <span>6.0d</span> <span>15-Aug-24</span> <span>22-Aug-24</span> </div>				<div style="display: flex; justify-content: space-between;"> <span>Install CU &amp; Final Connections</span> <span>6.0d</span> <span>15-Aug-24</span> <span>22-Aug-24</span> </div>
	<div style="display: flex; justify-content: space-between;"> <span>Electrical Terminations to Mech Equip.</span> <span>8.0d</span> <span>18-Nov-24</span> <span>27-Nov-24</span> </div>				<div style="display: flex; justify-content: space-between;"> <span>Electrical Terminations to Mech Equip.</span> <span>8.0d</span> <span>18-Nov-24</span> <span>27-Nov-24</span> </div>
	<div style="display: flex; justify-content: space-between;"> <span>Start Up, Test &amp; Balance</span> <span>4.0d</span> <span>28-Nov-24</span> <span>03-Dec-24</span> </div>				<div style="display: flex; justify-content: space-between;"> <span>Start Up, Test &amp; Balance</span> <span>4.0d</span> <span>28-Nov-24</span> <span>03-Dec-24</span> </div>
	<div style="display: flex; justify-content: space-between;"> <span>Cut &amp; Flash in Exhaust Fans</span> <span>10.0d</span> <span>09-Aug-24</span> <span>22-Aug-24</span> </div>				<div style="display: flex; justify-content: space-between;"> <span>Cut &amp; Flash in Exhaust Fans</span> <span>10.0d</span> <span>09-Aug-24</span> <span>22-Aug-24</span> </div>
	<div style="display: flex; justify-content: space-between;"> <span>Install AHU's Incl Final Connections</span> <span>6.0d</span> <span>18-Nov-24</span> <span>25-Nov-24</span> </div>				<div style="display: flex; justify-content: space-between;"> <span>Install AHU's Incl Final Connections</span> <span>6.0d</span> <span>18-Nov-24</span> <span>25-Nov-24</span> </div>
	<div style="display: flex; justify-content: space-between;"> <span>Structural Steel</span> <span>10.0d</span> <span>01-Aug-24</span> <span>14-Aug-24</span> </div>				<div style="display: flex; justify-content: space-between;"> <span>Structural Steel</span> <span>10.0d</span> <span>01-Aug-24</span> <span>14-Aug-24</span> </div>
	<div style="display: flex; justify-content: space-between;"> <span>Concrete Work for Penthouse AHU's Pads</span> <span>3.0d</span> <span>06-Aug-24</span> <span>08-Aug-24</span> </div>				<div style="display: flex; justify-content: space-between;"> <span>Concrete Work for Penthouse AHU's Pads</span> <span>3.0d</span> <span>06-Aug-24</span> <span>08-Aug-24</span> </div>
	<div style="display: flex; justify-content: space-between;"> <span>Duct Demolition in 100 Wing Attic</span> <span>5.0d</span> <span>22-Jul-24 A</span> <span>29-Jul-24</span> </div>				<div style="display: flex; justify-content: space-between;"> <span>Duct Demolition in 100 Wing Attic</span> <span>5.0d</span> <span>22-Jul-24 A</span> <span>29-Jul-24</span> </div>
	<div style="display: flex; justify-content: space-between;"> <span>Install Ductwork in 100 Wing Attic</span> <span>15.0d</span> <span>30-Jul-24</span> <span>19-Aug-24</span> </div>				<div style="display: flex; justify-content: space-between;"> <span>Install Ductwork in 100 Wing Attic</span> <span>15.0d</span> <span>30-Jul-24</span> <span>19-Aug-24</span> </div>
<b>23-084.1.1.C.7 Alteration &amp; Renovation Work 100 Wing</b>		<b>242.9d</b>	<b>09-Jul-24 A</b>	<b>31-Oct-25</b>	<div style="display: flex; justify-content: space-between;"> <span>24-Feb-25, 23-084.1.1.C.7.1 First 5 Classrooms 101, 103, 105, 107, &amp; 109</span> </div>
<b>23-084.1.1.C.7.1 First 5 Classrooms 101, 103, 105, 107, &amp; 109</b>		<b>64.0d</b>	<b>09-Jul-24 A</b>	<b>24-Feb-25</b>	<div style="display: flex; justify-content: space-between;"> <span>24-Feb-25, 23-084.1.1.C.7.1 First 5 Classrooms 101, 103, 105, 107, &amp; 109</span> </div>
	<div style="display: flex; justify-content: space-between;"> <span>Selective Demolition</span> <span>6.0d</span> <span>09-Jul-24 A</span> <span>12-Jul-24 A</span> </div>				<div style="display: flex; justify-content: space-between;"> <span>Selective Demolition</span> <span>6.0d</span> <span>09-Jul-24 A</span> <span>12-Jul-24 A</span> </div>
	<div style="display: flex; justify-content: space-between;"> <span>Rough In Electrical &amp; Comm</span> <span>10.0d</span> <span>18-Jul-24 A</span> <span>10-Dec-24</span> </div>				<div style="display: flex; justify-content: space-between;"> <span>Rough In Electrical &amp; Comm</span> <span>10.0d</span> <span>18-Jul-24 A</span> <span>10-Dec-24</span> </div>
	<div style="display: flex; justify-content: space-between;"> <span>Prep &amp; Paint / Stone Polishing</span> <span>6.0d</span> <span>30-Dec-24</span> <span>06-Jan-25</span> </div>				<div style="display: flex; justify-content: space-between;"> <span>Prep &amp; Paint / Stone Polishing</span> <span>6.0d</span> <span>30-Dec-24</span> <span>06-Jan-25</span> </div>
	<div style="display: flex; justify-content: space-between;"> <span>Metal Framing</span> <span>10.0d</span> <span>12-Jul-24 A</span> <span>16-Jul-24 A</span> </div>				<div style="display: flex; justify-content: space-between;"> <span>Metal Framing</span> <span>10.0d</span> <span>12-Jul-24 A</span> <span>16-Jul-24 A</span> </div>
	<div style="display: flex; justify-content: space-between;"> <span>Sheetrock Tape &amp; Spackle</span> <span>10.0d</span> <span>16-Dec-24</span> <span>27-Dec-24</span> </div>				<div style="display: flex; justify-content: space-between;"> <span>Sheetrock Tape &amp; Spackle</span> <span>10.0d</span> <span>16-Dec-24</span> <span>27-Dec-24</span> </div>
	<div style="display: flex; justify-content: space-between;"> <span>Rough In Plumbing</span> <span>8.0d</span> <span>04-Dec-24</span> <span>13-Dec-24</span> </div>				<div style="display: flex; justify-content: space-between;"> <span>Rough In Plumbing</span> <span>8.0d</span> <span>04-Dec-24</span> <span>13-Dec-24</span> </div>
	<div style="display: flex; justify-content: space-between;"> <span>Plumbing Insulation</span> <span>4.0d</span> <span>10-Dec-24</span> <span>13-Dec-24</span> </div>				<div style="display: flex; justify-content: space-between;"> <span>Plumbing Insulation</span> <span>4.0d</span> <span>10-Dec-24</span> <span>13-Dec-24</span> </div>
	<div style="display: flex; justify-content: space-between;"> <span>Install Ceiling Grid</span> <span>12.0d</span> <span>12-Jul-24 A</span> <span>15-Jul-24 A</span> </div>				<div style="display: flex; justify-content: space-between;"> <span>Install Ceiling Grid</span> <span>12.0d</span> <span>12-Jul-24 A</span> <span>15-Jul-24 A</span> </div>
	<div style="display: flex; justify-content: space-between;"> <span>Install Ceiling Tile</span> <span>8.0d</span> <span>07-Jan-25</span> <span>16-Jan-25</span> </div>				<div style="display: flex; justify-content: space-between;"> <span>Install Ceiling Tile</span> <span>8.0d</span> <span>07-Jan-25</span> <span>16-Jan-25</span> </div>
	<div style="display: flex; justify-content: space-between;"> <span>Resilient Floor Finishes</span> <span>6.0d</span> <span>24-Jan-25</span> <span>31-Jan-25</span> </div>				<div style="display: flex; justify-content: space-between;"> <span>Resilient Floor Finishes</span> <span>6.0d</span> <span>24-Jan-25</span> <span>31-Jan-25</span> </div>
	<div style="display: flex; justify-content: space-between;"> <span>Install Door Frames</span> <span>5.0d</span> <span>27-Nov-24</span> <span>03-Dec-24</span> </div>				<div style="display: flex; justify-content: space-between;"> <span>Install Door Frames</span> <span>5.0d</span> <span>27-Nov-24</span> <span>03-Dec-24</span> </div>
	<div style="display: flex; justify-content: space-between;"> <span>Install Doors / Hardware</span> <span>4.0d</span> <span>03-Feb-25</span> <span>06-Feb-25</span> </div>				<div style="display: flex; justify-content: space-between;"> <span>Install Doors / Hardware</span> <span>4.0d</span> <span>03-Feb-25</span> <span>06-Feb-25</span> </div>
	<div style="display: flex; justify-content: space-between;"> <span>Resinous Epoxy Flooring</span> <span>5.0d</span> <span>17-Jan-25</span> <span>23-Jan-25</span> </div>				<div style="display: flex; justify-content: space-between;"> <span>Resinous Epoxy Flooring</span> <span>5.0d</span> <span>17-Jan-25</span> <span>23-Jan-25</span> </div>
	<div style="display: flex; justify-content: space-between;"> <span>Wall Tiling</span> <span>6.0d</span> <span>22-Jan-25</span> <span>29-Jan-25</span> </div>				<div style="display: flex; justify-content: space-between;"> <span>Wall Tiling</span> <span>6.0d</span> <span>22-Jan-25</span> <span>29-Jan-25</span> </div>
	<div style="display: flex; justify-content: space-between;"> <span>Install Visual Display Boards</span> <span>3.0d</span> <span>03-Feb-25</span> <span>05-Feb-25</span> </div>				<div style="display: flex; justify-content: space-between;"> <span>Install Visual Display Boards</span> <span>3.0d</span> <span>03-Feb-25</span> <span>05-Feb-25</span> </div>
	<div style="display: flex; justify-content: space-between;"> <span>Install Toilet Accessories</span> <span>2.0d</span> <span>12-Feb-25</span> <span>13-Feb-25</span> </div>				<div style="display: flex; justify-content: space-between;"> <span>Install Toilet Accessories</span> <span>2.0d</span> <span>12-Feb-25</span> <span>13-Feb-25</span> </div>
	<div style="display: flex; justify-content: space-between;"> <span>Install Plumbing Fixtures</span> <span>5.0d</span> <span>05-Feb-25</span> <span>11-Feb-25</span> </div>				<div style="display: flex; justify-content: space-between;"> <span>Install Plumbing Fixtures</span> <span>5.0d</span> <span>05-Feb-25</span> <span>11-Feb-25</span> </div>
	<div style="display: flex; justify-content: space-between;"> <span>Install Cabinetry &amp; Countertops</span> <span>5.0d</span> <span>03-Feb-25</span> <span>07-Feb-25</span> </div>				<div style="display: flex; justify-content: space-between;"> <span>Install Cabinetry &amp; Countertops</span> <span>5.0d</span> <span>03-Feb-25</span> <span>07-Feb-25</span> </div>
	<div style="display: flex; justify-content: space-between;"> <span>Light Fixtures</span> <span>8.0d</span> <span>07-Jan-25</span> <span>16-Jan-25</span> </div>				<div style="display: flex; justify-content: space-between;"> <span>Light Fixtures</span> <span>8.0d</span> <span>07-Jan-25</span> <span>16-Jan-25</span> </div>
	<div style="display: flex; justify-content: space-between;"> <span>Electrical Devices</span> <span>6.0d</span> <span>07-Jan-25</span> <span>14-Jan-25</span> </div>				<div style="display: flex; justify-content: space-between;"> <span>Electrical Devices</span> <span>6.0d</span> <span>07-Jan-25</span> <span>14-Jan-25</span> </div>

<div style="display: flex; justify-content: space-between;"> <span> Actual Level of Effort</span> <span> Remaining Work</span> <span> Milestone</span> </div>	<div style="display: flex; justify-content: space-between;"> <span> Actual Work</span> <span> Critical Remaining Work</span> <span> Summary</span> </div>	
---	---	--



Manasquan Elementary School Renovations and Alterations			For Submission													26-Jul-24 14:00												
Activity ID	Activity Name	Original Duration	Start	Finish	J	F	M	A	M	J	J	A	S	O	N	D	J	F	M	A	M	J	J	A	S	O	N	
A2420	Fire Alarm Devices	6.0d	07-Jan-25	14-Jan-25																								
A2430	Cleaning & Turnover	2.0d	14-Feb-25	17-Feb-25																								
A2880	Furniture Set Up - Owner Relocate	5.0d	18-Feb-25	24-Feb-25																								
<b>23-084.1.1.C.7.2 Second 5 Classrooms 102, 104, 106, 108, &amp; 110</b>		<b>86.0d</b>	<b>06-Mar-25</b>	<b>03-Jul-25</b>																								
A2440	Selective Demolition	6.0d	06-Mar-25*	13-Mar-25																								
A2450	Rough In Electrical & Comm	10.0d	14-Mar-25	27-Mar-25																								
A2460	Metal Framing	10.0d	14-Mar-25	27-Mar-25																								
A2470	Install Door Frames	5.0d	21-Mar-25	27-Mar-25																								
A2480	Rough In Plumbing	8.0d	28-Mar-25	08-Apr-25																								
A2490	Plumbing Insulation	4.0d	03-Apr-25	08-Apr-25																								
A2500	Sheetrock Tape & Spackle	10.0d	09-Apr-25	22-Apr-25																								
A2510	Prep & Paint / Stone Polishing	6.0d	23-Apr-25	30-Apr-25																								
A2520	Install Ceiling Grid	12.0d	01-May-25	16-May-25																								
A2530	Electrical Devices	6.0d	01-May-25	08-May-25																								
A2540	Fire Alarm Devices	6.0d	01-May-25	08-May-25																								
A2550	Light Fixtures	8.0d	19-May-25	28-May-25																								
A2560	Install Ceiling Tile	8.0d	19-May-25	28-May-25																								
A2570	Resilient Floor Finishes	5.0d	05-Jun-25	11-Jun-25																								
A2580	Resinous Epoxy Flooring	5.0d	29-May-25	04-Jun-25																								
A2590	Wall Tiling	6.0d	03-Jun-25	10-Jun-25																								
A2600	Install Doors / Hardware	4.0d	12-Jun-25	17-Jun-25																								
A2610	Install Visual Display Boards	3.0d	12-Jun-25	16-Jun-25																								
A2620	Install Cabinetry & Countertops	5.0d	12-Jun-25	18-Jun-25																								
A2630	Install Plumbing Fixtures	5.0d	16-Jun-25	20-Jun-25																								
A2640	Install Toilet Accessories	2.0d	23-Jun-25	24-Jun-25																								
A2650	Cleaning & Turnover	2.0d	25-Jun-25	26-Jun-25																								
A2890	Furniture Set Up - Owner Relocate	5.0d	27-Jun-25	03-Jul-25																								
<b>23-084.1.1.C.7.3 Third 5 Classrooms 111, 112, 113, 114, &amp; 115</b>		<b>77.0d</b>	<b>16-Jul-25</b>	<b>31-Oct-25</b>																								
A2660	Selective Demolition	6.0d	16-Jul-25*	24-Jul-25																								
A2670	Rough In Electrical & Comm	10.0d	25-Jul-25	07-Aug-25																								
A2680	Metal Framing	10.0d	25-Jul-25	07-Aug-25																								
A2690	Install Door Frames	5.0d	01-Aug-25	07-Aug-25																								
A2700	Rough In Plumbing	8.0d	08-Aug-25	19-Aug-25																								
A2710	Plumbing Insulation	4.0d	14-Aug-25	19-Aug-25																								
A2720	Sheetrock Tape & Spackle	10.0d	20-Aug-25	02-Sep-25																								
A2730	Prep & Paint / Stone Polishing	6.0d	03-Sep-25	10-Sep-25																								
A2740	Install Ceiling Grid	12.0d	11-Sep-25	26-Sep-25																								
A2750	Electrical Devices	6.0d	11-Sep-25	18-Sep-25																								
A2760	Fire Alarm Devices	6.0d	11-Sep-25	18-Sep-25																								
A2770	Light Fixtures	8.0d	29-Sep-25	08-Oct-25																								
A2780	Install Ceiling Tile	8.0d	29-Sep-25	08-Oct-25																								
A2790	Resilient Floor Finishes	5.0d	16-Oct-25	22-Oct-25																								
A2800	Resinous Epoxy Flooring	5.0d	09-Oct-25	15-Oct-25																								

Activity ID	Activity Name	Original Duration	Start	Finish	J	F	M	A	M	J	J	A	S	O	N	D	J	F	M	A	M	J	J	A	S	O	N
A2810	Wall Tiling	6.0d	14-Oct-25	21-Oct-25																							
A2820	Install Doors / Hardware	4.0d	23-Oct-25	28-Oct-25																							
A2830	Install Visual Display Boards	3.0d	23-Oct-25	27-Oct-25																							
A2840	Install Cabinetry & Countertops	5.0d	23-Oct-25	29-Oct-25																							
A2850	Install Plumbing Fixtures	4.0d	22-Oct-25	27-Oct-25																							
A2860	Install Toilet Accessories	2.0d	28-Oct-25	29-Oct-25																							
A2870	Cleaning & Turnover	2.0d	30-Oct-25	31-Oct-25																							
<b>23-084.1.1.C.8 Art Room</b>		<b>64.0d</b>	<b>21-Jun-24 A</b>	<b>18-Sep-24</b>																							
A3150	Demolition	10.0d	21-Jun-24 A	05-Jul-24 A																							
A3160	Rough In Electrical	10.0d	09-Jul-24 A	16-Jul-24 A																							
A3170	Rough In Plumbing	8.0d	23-Jul-24	01-Aug-24																							
A3180	Install Ductwork	8.0d	02-Jul-24 A	01-Aug-24																							
A3190	Misc. Patching	10.0d	23-Jul-24	05-Aug-24																							
A3200	Structural Steel for Operable Partition	5.0d	24-Jul-24	30-Jul-24																							
A3210	Metal Framing	10.0d	31-Jul-24	13-Aug-24																							
A3220	Sheetrock Tape & Spackle	6.0d	14-Aug-24	21-Aug-24																							
A3230	Painting	8.0d	22-Aug-24	02-Sep-24																							
A3240	Resilient Flooring	7.0d	03-Sep-24	11-Sep-24																							
A3250	Install Wall Mounted Accesories	5.0d	12-Sep-24	18-Sep-24																							
A3260	Install Operable Partition	5.0d	12-Sep-24	18-Sep-24																							
A3270	Install Plumbing Fixtures	4.0d	12-Sep-24	17-Sep-24																							
A3280	Door & Hardware	2.0d	12-Sep-24	13-Sep-24																							
A3290	Install Light Fixtures	8.0d	03-Sep-24	12-Sep-24																							
A3300	Install Power Devices	6.0d	03-Sep-24	10-Sep-24																							
A3310	Fire Alarm Devices	6.0d	03-Sep-24	10-Sep-24																							
A3320	Millwork (Finish Grade Plywood)	2.0d	14-Aug-24	15-Aug-24																							
A3330	Install Precast Lintel & HM Frame	6.0d	23-Jul-24	30-Jul-24																							
A3340	Install Security Gate	3.0d	12-Sep-24	16-Sep-24																							
<b>23-084.1.1.C.9 Science Lab Alterations</b>		<b>65.0d</b>	<b>24-Jun-24 A</b>	<b>19-Sep-24</b>																							
A3350	Demolition	8.0d	24-Jun-24 A	05-Jul-24 A																							
A3360	Rough In Electrical	10.0d	23-Jul-24	05-Aug-24																							
A3370	Rough In Plumbing	10.0d	23-Jul-24	05-Aug-24																							
A3380	Install Ductwork	3.0d	23-Jul-24	25-Jul-24																							
A3390	Metal Framing	8.0d	23-Jul-24	01-Aug-24																							
A3400	Install Door Frames	3.0d	30-Jul-24	01-Aug-24																							
A3410	Sheetrock Tape & Spackle	6.0d	05-Aug-24	12-Aug-24																							
A3420	Painting	8.0d	12-Aug-24	21-Aug-24																							
A3430	Modify Ceilings for Pull Down Electrical Reels	2.0d	22-Aug-24	23-Aug-24																							
A3440	Install Electrical Reels	2.0d	26-Aug-24	27-Aug-24																							
A3450	Resilient Flooring & Base	6.0d	30-Aug-24	06-Sep-24																							
A3460	Install Roller Shades	1.0d	30-Aug-24	30-Aug-24																							
A3470	Wall Mounted Accessories	2.0d	13-Sep-24	16-Sep-24																							
A3480	Install ACT Ceiling Grid	3.0d	22-Aug-24	26-Aug-24																							

18-Sep-24, 23-084.1.1.C.8 Art Room

- Demolition
- Rough In Electrical
- Rough In Plumbing
- Install Ductwork
- Misc. Patching
- Structural Steel for Operable Partition
- Metal Framing
- Sheetrock Tape & Spackle
- Painting
- Resilient Flooring
- Install Wall Mounted Accesories
- Install Operable Partition
- Install Plumbing Fixtures
- Door & Hardware
- Install Light Fixtures
- Install Power Devices
- Fire Alarm Devices
- Millwork (Finish Grade Plywood)
- Install Precast Lintel & HM Frame
- Install Security Gate

19-Sep-24, 23-084.1.1.C.9 Science Lab Alterations

- Demolition
- Rough In Electrical
- Rough In Plumbing
- Install Ductwork
- Metal Framing
- Install Door Frames
- Sheetrock Tape & Spackle
- Painting
- Modify Ceilings for Pull Down Electrical Reels
- Install Electrical Reels
- Resilient Flooring & Base
- Install Roller Shades
- Wall Mounted Accessories
- Install ACT Ceiling Grid

█ Actual Level of Effort   
 █ Remaining Work   
 █ Critical Remaining Work   
 ◆ Milestone   
 ▾ Summary

Activity ID	Activity Name	Original Duration	Start	Finish	J	F	M	A	M	J	J	A	S	O	N	D	J	F	M	A	M	J	J	A	S	O	N
A3490	Install Light Fixtures	4.0d	27-Aug-24	30-Aug-24																							
A3500	Install ACT Tile	3.0d	27-Aug-24	29-Aug-24																							
A3510	Install Doors & Hardware	2.0d	09-Sep-24	10-Sep-24																							
A3520	Install Power Devices	6.0d	22-Aug-24	29-Aug-24																							
A3530	Install Fire Alarm Devices	4.0d	27-Aug-24	30-Aug-24																							
A3540	Install Plumbing Fixtures	5.0d	13-Sep-24	19-Sep-24																							
A3550	Owner Installed Cabinetry	4.0d	09-Sep-24	12-Sep-24																							
<b>23-084.1.1.C.10 All Other Work</b>		<b>49.0d</b>	<b>23-Jul-24</b>	<b>27-Sep-24</b>																							
A2210	Exterior Masonry Repointing	40.0d	05-Aug-24*	27-Sep-24																							
A3560	Rough In Electrical for New Panelboards	30.0d	23-Jul-24	02-Sep-24																							
A3570	Install Panelboards	10.0d	03-Sep-24	16-Sep-24																							