



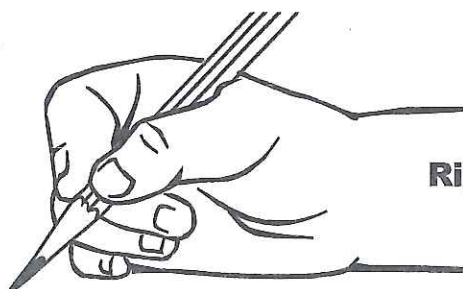
Review Letter Formations With Your Child

For the next 12 weeks, your child will practice writing the letters in **lowercase**. As you may notice, these will not be taught in alphabetical order. This is because we group letters with similar formations.

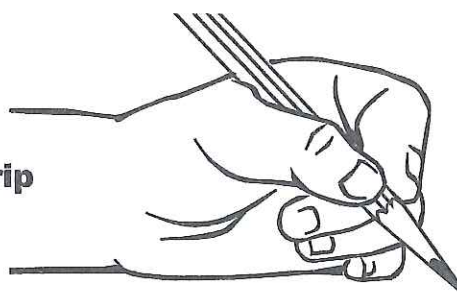
WEEK	LETTERS	WEEK	LETTERS	WEEK	LETTERS
1	t b f	5	a g	9	l h k
2	n m	6	d s	10	v w
3	i u	7	e r	11	y x
4	c o	8	p j	12	z q

Encourage correct pencil grip

Be sure your child has the pencil between the index finger and the thumb and then rests it on the other fingers.



Right Hand Pencil Grip



Left Hand Pencil Grip

When your child writes, both elbows should be on the table and feet should be on the floor, if possible. You can use an old box under the table if the table is too high. Also, have your child hold the paper with the non-writing hand.

(Continued on next page)



Review Letter Formations With Your Child (Continued)

Practice the letter formations

You can practice the letter formations at home just like we are practicing them in school.

We call the special lines our **Writing Grid**. The pictures indicate the names of the lines: the sky line, plane line, grass line and worm line (see below).



SKY LINE



PLANE LINE



GRASS LINE



WORM LINE

Letter Formation for t

t is a sky line letter.
It starts on the (sky line).

1. Point to the sky line.
2. Go down to the grass line.
3. Cross it on the plane line.
4. Say t - top - /t/, have students repeat.

WILSON Foundations®

As your child traces the letter, guide him or her by reading the directions on the enclosed **Letter Formation Guide**.

Say the verbal step-by-step guidelines while your child traces the **lower-case letter** with his or her **finger**. *Try to do the week's letters every night.* Have your child color the pictures as well.

Remember, you are not only sharing a fun experience but you are being the Coach as well, reinforcing some of the things we are doing in school.



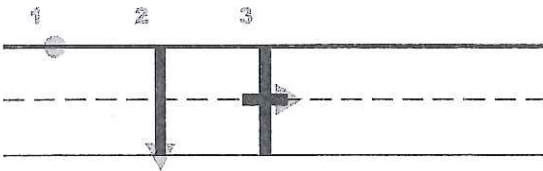
Fundations Letter Formation Guide

Say the verbal step-by-step guidelines while your child traces the *lower-case* letter with his or her finger. Try to do the week's letters every night. (Only do the lower-case letter.) Have your child color the picture.

Letter Formation for t

t is a sky line letter.

It starts on the (sky line).

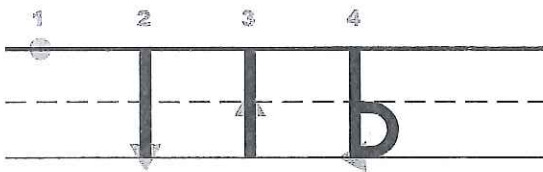


1. Point to the sky line.
2. Go down to the grass line.
3. Cross it on the plane line.
4. Say t - top - /t/, have students repeat.

Letter Formation for b

b is a sky line letter.

It starts on the (sky line).

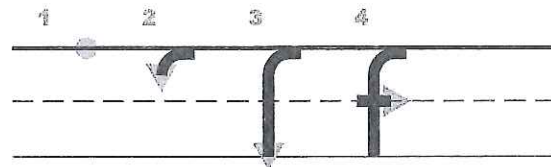


1. Point to the sky line.
2. Go down to the grass line.
3. Trace up to the plane line,
4. and around to the grass line.
5. Say b - bat - /b/, have students repeat.

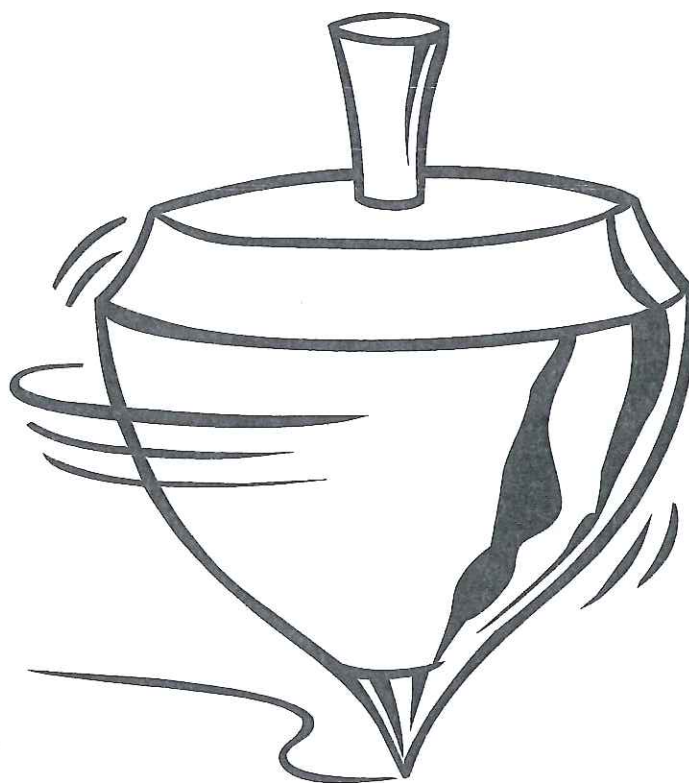
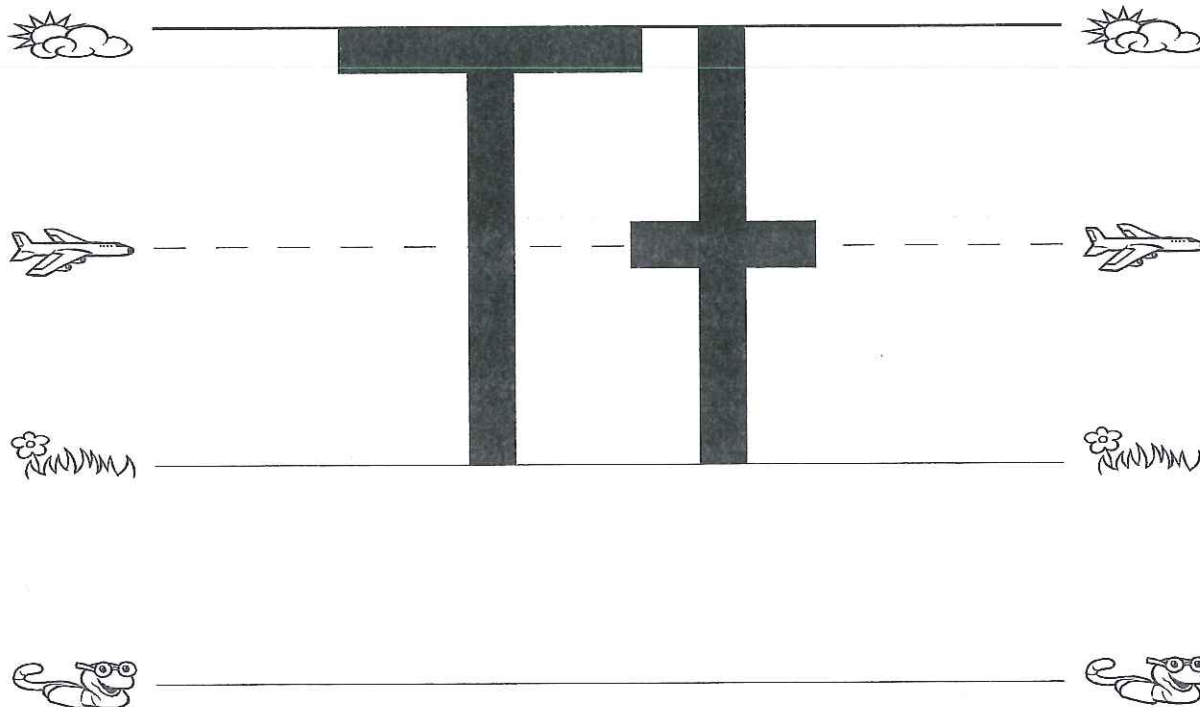
Letter Formation for f

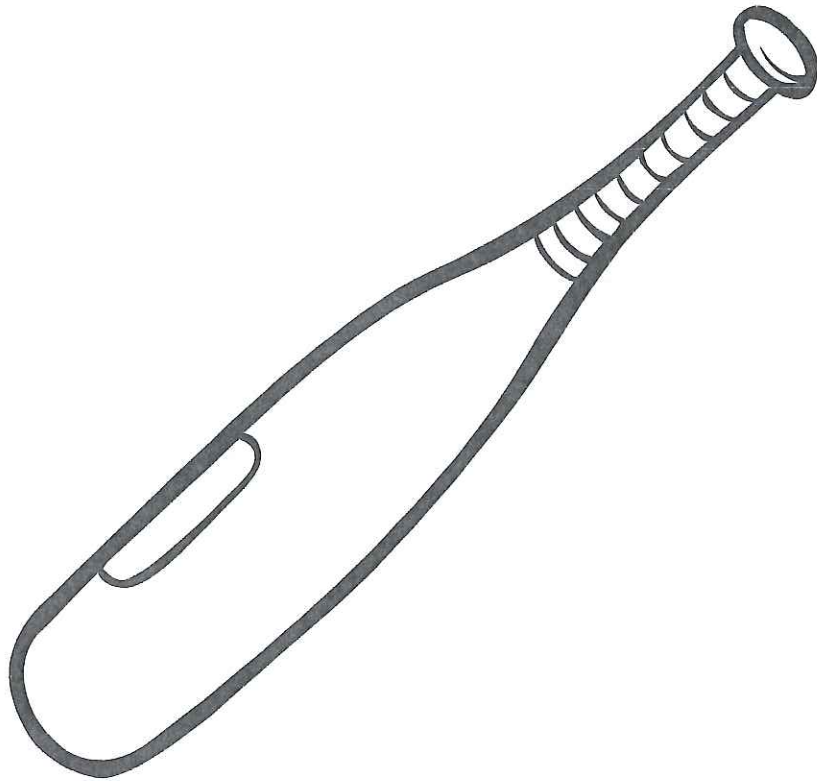
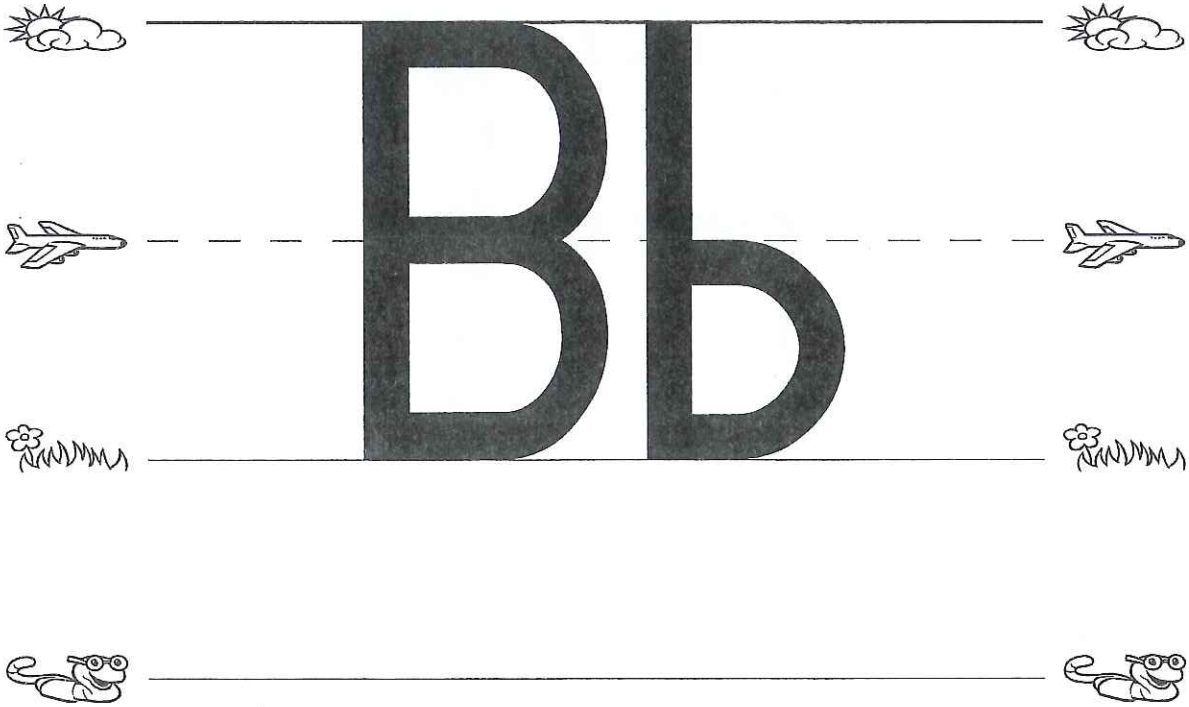
f is a sky line letter.

It starts on the (sky line).



1. Point to the sky line.
2. Trace back on the sky line,
3. and then way down to the grass line.
4. Cross it on the plane line.
5. Say f - fun - /f/, have students repeat.







Ff

